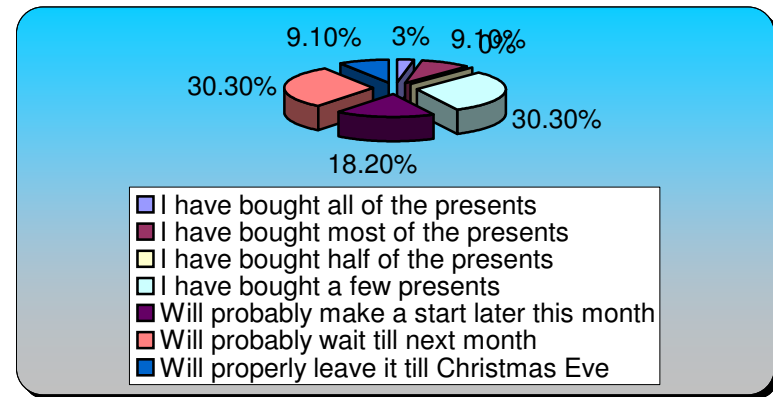


Turning Graphical Results by Question

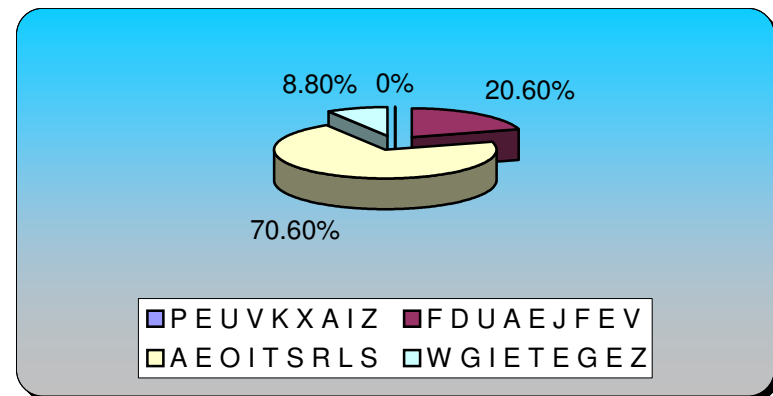
Session Name: NWTWC Seminar

Created: 02/11/2010 12:59

1.) How organised are you for Christmas?	Responses	
I have bought all of the presents	1	3.03%
I have bought most of the presents	3	9.09%
I have bought half of the presents	0	0%
I have bought a few presents	10	30.30%
Will probably make a start later this month	6	18.18%
Will probably wait till next month	10	30.30%
Will properly leave it till Christmas Eve	3	9.09%
Totals	33	100%

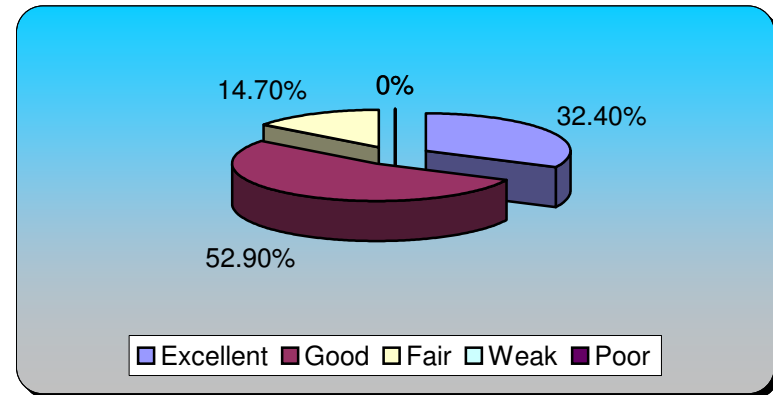


2.) C E T V O U I N	Responses	
PEUVKXAIZ	0	0%
FDUAEJFEV	7	20.59%
AEOITSRLS	24	70.59%
WGIETEGEZ	3	8.82%
Totals	34	100%



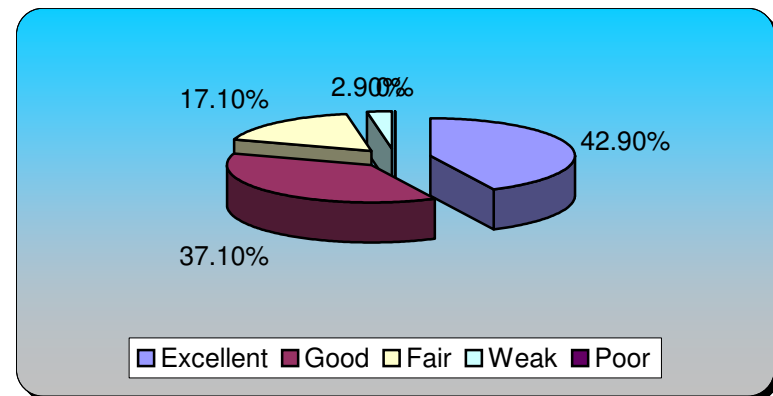
3.) What did you feel about the appropriate level of detail?

	Responses	
Excellent	11	32.35%
Good	18	52.94%
Fair	5	14.71%
Weak	0	0%
Poor	0	0%
Totals	34	100%



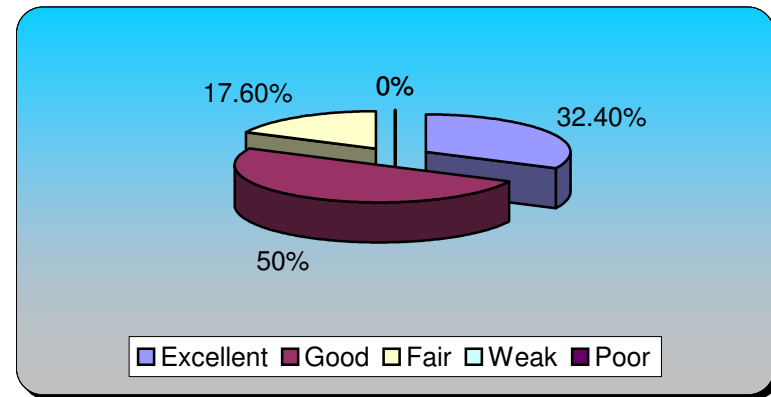
4.) What did you feel about the relevance to your work?

	Responses	
Excellent	15	42.86%
Good	13	37.14%
Fair	6	17.14%
Weak	1	2.86%
Poor	0	0%
Totals	35	100%



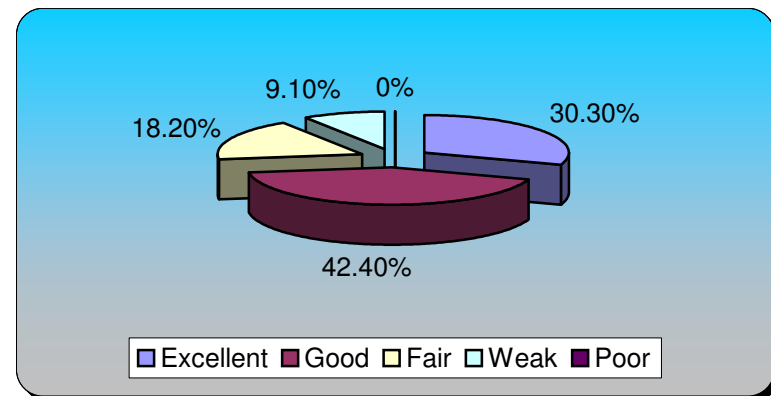
5.) What did you feel about the quality of speakers? Responses

Excellent	11	32.35%
Good	17	50%
Fair	6	17.65%
Weak	0	0%
Poor	0	0%
Totals	34	100%



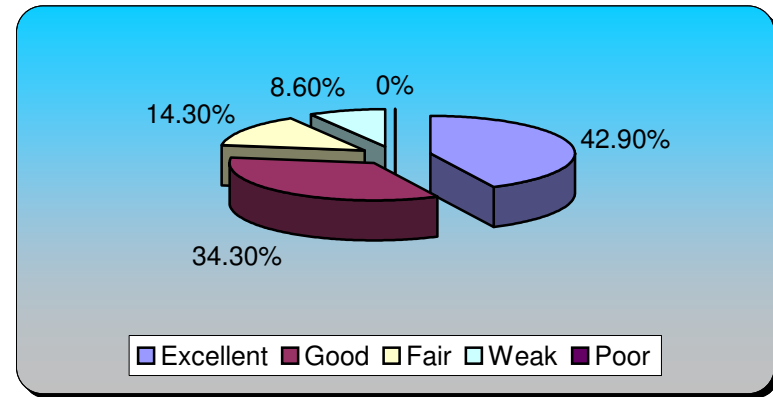
6.) What did you feel about the usefulness of discussions? Responses

Excellent	10	30.30%
Good	14	42.42%
Fair	6	18.18%
Weak	3	9.09%
Poor	0	0%
Totals	33	100%



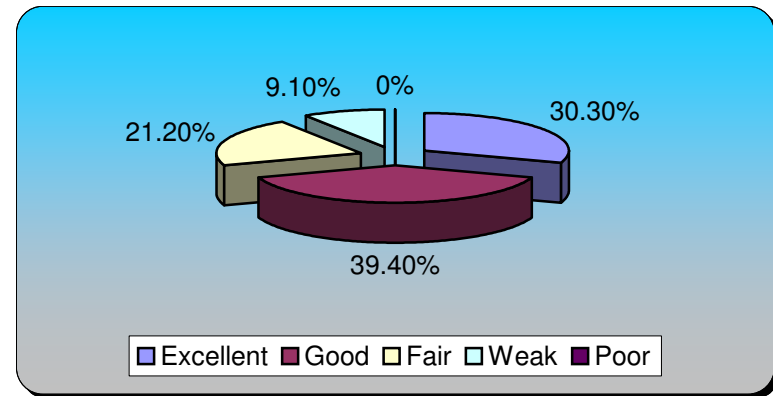
7.) What do you feel about this seminar organisation?

	Responses	
Excellent	15	42.86%
Good	12	34.29%
Fair	5	14.29%
Weak	3	8.57%
Poor	0	0%
Totals	35	100%



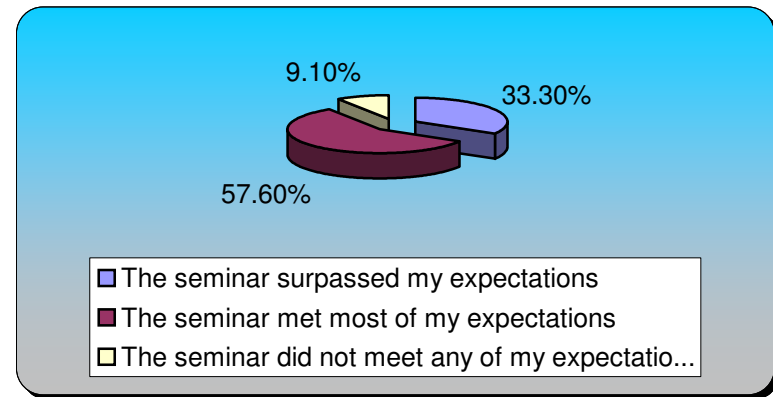
8.) What do you feel about it being well structured and well paced?

	Responses	
Excellent	10	30.30%
Good	13	39.39%
Fair	7	21.21%
Weak	3	9.09%
Poor	0	0%
Totals	33	100%



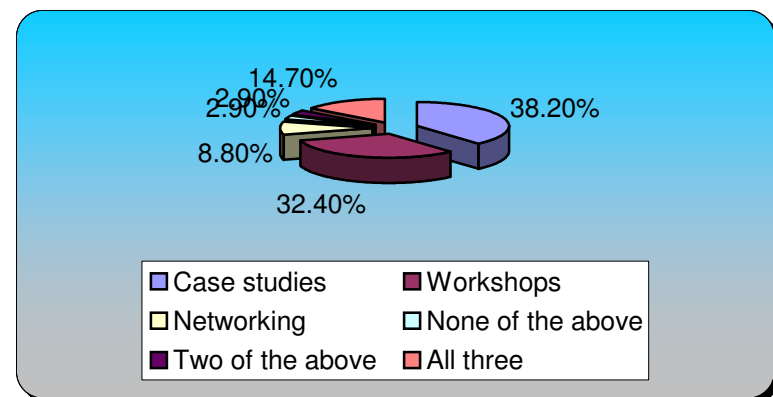
9.) Did this seminar meet your expectations? Responses

The seminar surpassed my expectations	11	33.33%
The seminar met most of my expectations	19	57.58%
The seminar did not meet any of my expectatio...	3	9.09%
Totals	33	100%



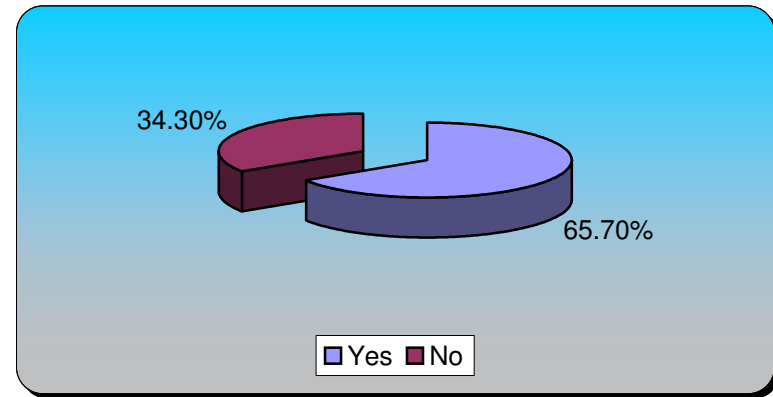
10.) Which aspect of the seminar was most useful to you and why? Responses

Case studies	13	38.24%
Workshops	11	32.35%
Networking	3	8.82%
None of the above	1	2.94%
Two of the above	1	2.94%
All three	5	14.71%
Totals	34	100%



11.) Did you make any new contacts at the seminar?

	Responses	
Yes	23	65.71%
No	12	34.29%
Totals	35	100%



12.) Will you be following these up?

	Responses	
Yes	22	66.67%
No	11	33.33%
Totals	33	100%

